

Mast Units



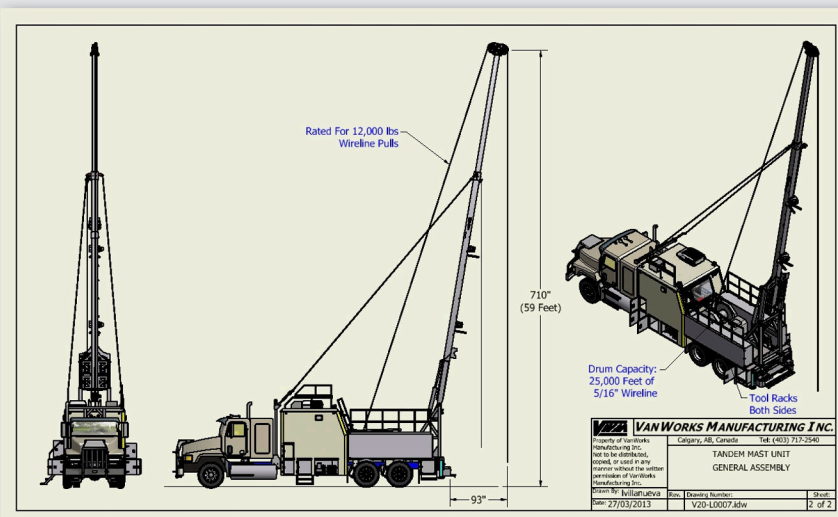
Overview

Custom built wireline mast units to your specifications for rigless work from one self-contained unit. Your choice of chassis. Drawworks and wireline(s) capacity to your requirements. Mast designed with good height and capacity. Spooler options available. Nice size and height inside operators' cabin and is heated and air conditioned. 110 Volt ac generator options. Every unit designed and laid out to meet your needs.



Mast Units

Highlights



- > Built on 6x4 or 8x6 chassis
- > Mast tip height: 59 feet
- > Mast wireline load rating: 12,000 lbs
- > Wireline drums for 7/32", 9/32" and 5/16" x 7500 meters available and more! Options from 1 line to 4 lines.
- > Standard line speed range: 3 m/min - 250 m/min
- > Inside height of roomy operators' cabin: 6'4" with heat and A/C
- > Spooler options include regular overhead spooler for normal measuring heads or VanWorks custom 2 bar spooler with integral depth and tension measurements
- > Hydraulic or inverter generator options

Additional Features

- > Slant hole capable
- > Rear pull-out platform
- > Two auxilliary winches
- > Ceiling window for visibility crown to ground
- > High quality bright LED lighting
- > Storage maximized based on customers' needs
- > Open deck with lift cylinders out of the way
- > Maxi-pot type lubricator clamps
- > Options for corner crane and grease available

More Photos Detailing Units

